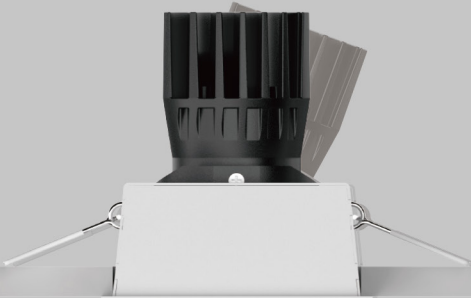


# GAIA S75 Single

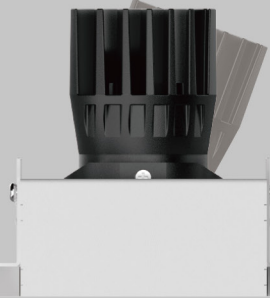


GAIA Family

GA75-S01QS



GA75-S01QT



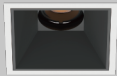
With Trim

Trimless

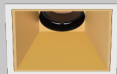
White



Black



Golden



GA75-S01QS

25°/360°

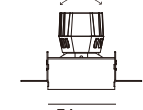


82mm  
3.23"

87mm  
3.43"

GA75-S01QT

25°/360°



74mm  
2.91"

87mm  
3.43"

## Basic Information

|                      |                    |
|----------------------|--------------------|
| Model                | GA75-S01QS/S01QT   |
| Embedded Parts       | With Trim/Trimless |
| Mounting             | Recessed           |
| Trim Finishing Color | White/Black        |
| Reflector Color      | White/Black/Golden |
| Material             | Aluminum           |
| Cutout Size          | 75*75mm            |
| Light Direction      | 25° 360°           |
| IP Rating            | IP20               |
| Power                | Max. 12W           |
| Input Voltage        | DC36V              |
| Input Current        | Max. 300mA         |

## Optical Parameters

|                 |                         |
|-----------------|-------------------------|
| Light Source    | LED COB                 |
| Lumens          | 65lm/W 90lm/W           |
| CRI             | 97Ra / 90Ra             |
| CCT             | 3000K 3500K 4000K       |
| CCT Changeable  | 2700K 6000K 1800K 3000K |
| Beam Angle      | 15° 25° 35° 50°         |
| Shielding Angle | 46°                     |
| UGR             | < 13                    |
| LED Lifespan    | 50000hrs                |

Driver Voltage AC100-120V AC220-240V

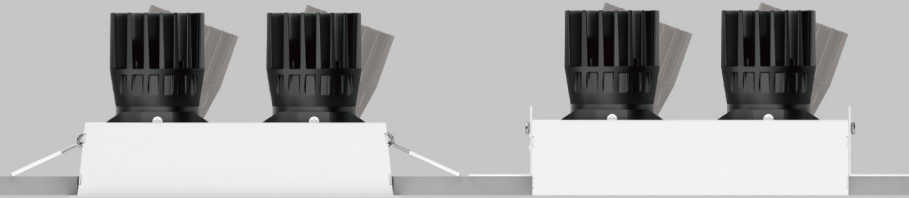
Driver Options ON/OFF DIM TRIAC/ PHASE-CUT DIM 0/1-10V DIM DALI

# GAIA S75 Double



GA75-S01QS2

GA75-S01QT2



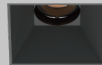
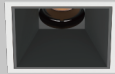
With Trim

Trimless

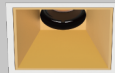
White



Black

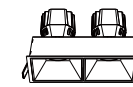


Golden



GA75-S01QS2

25°/360°

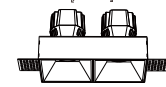


156\*82mm  
6.14\*3.23"

87mm  
3.43"

GA75-S01QT2

25°/360°



148\*74mm  
5.83\*2.91"

87mm  
3.43"

## Basic Information

|                      |                    |
|----------------------|--------------------|
| Model                | GA75-S01QS2/S01QT2 |
| Embedded Parts       | With Trim/Trimless |
| Mounting             | Recessed           |
| Trim Finishing Color | White/Black        |
| Reflector Color      | White/Black/Golden |
| Material             | Aluminum           |
| Cutout Size          | 150*75mm           |
| Light Direction      | 25° 360°           |
| IP Rating            | IP20               |
| Power                | Max. 2*12W         |
| Input Voltage        | DC36V              |
| Input Current        | Max. 2*300mA       |

## Optical Parameters

|                 |                         |
|-----------------|-------------------------|
| Light Source    | LED COB                 |
| Lumens          | 65lm/W 90lm/W           |
| CRI             | 97Ra / 90Ra             |
| CCT             | 3000K 3500K 4000K       |
| CCT Changeable  | 2700K 6000K 1800K 3000K |
| Beam Angle      | 15° 25° 35° 50°         |
| Shielding Angle | 46°                     |
| UGR             | < 13                    |
| LED Lifespan    | 50000hrs                |

|                |  |
|----------------|--|
| Driver Voltage | AC100-120V AC220-240V                            |
| Driver Options | ON/OFF DIM TRIAC/ PHASE-CUT DIM 0/1-10V DIM DALI |